

# NUPECC PLENARY MEETING

## 12 – 13 JUNE 2025



### MEETING VENUE, June 12



#### European Science Foundation – ESF Building

📍 : 1 Quai Lezay-Marnésia | BP 90015 |  
67080 Strasbourg

☎ : +33 (0)3 88 76 71 00 (Reception)

🌐 : [www.esf.org](http://www.esf.org)

Entrance gate: **1 rue des Récollets**

## Hotels recommendations



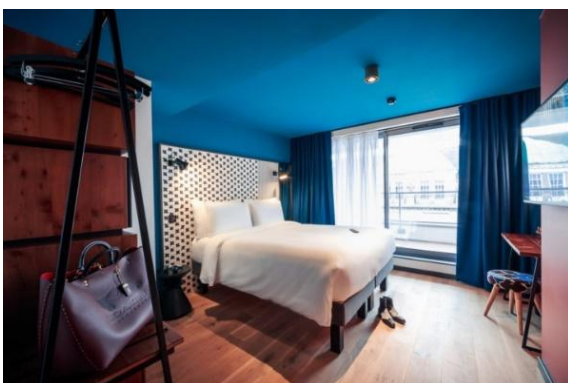
### Le Grand Hotel 3\*

📍 : 12 Place de la Gare 67000Strasbourg

☎ : +33 3 88 52 84 84

🌐 : [Home · Grand Hôtel Strasbourg \(le-grand-hotel.com\)](http://Home·GrandHôtelStrasbourg(le-grand-hotel.com))

22 min walking to ESF, next to the train Station



### BOMA 3\*

📍 : 7 rue du 22 novembre 67000  
Strasbourg

☎ : +33 (0)3 90 00 00 10

🌐 : <http://www.boma-hotel.com/?lang=en>

15 min walking to ESF



### Hotel Régent 4\*

📍 : 8 avenue de la Liberté 67000  
Strasbourg

☎ : +33 3 88 15 05 05

🌐 : <https://regent-contades.com/en/>

5 min walking to ESF



### Hotel Hannong 4\*

📍 : 15 rue du 22 novembre 67000  
Strasbourg

☎ : +33 3 88 32 16 22

🌐 : <https://www.hotel-hannong.com/>

14 min walking to ESF



#### **Hotel Aloft 4\***

📍 : 2 avenue du Rhin 67100 Strasbourg

☎ : +33 3 67 70 78 10

📧 :

<https://www.marriott.com/fr/hotels/sxba-laloft-strasbourg-etoile/overview/>

22 min walking to ESF



#### **AC Hotel 4\***

📍 : 4 -6 Bd de Dresde, 67000 Strasbourg

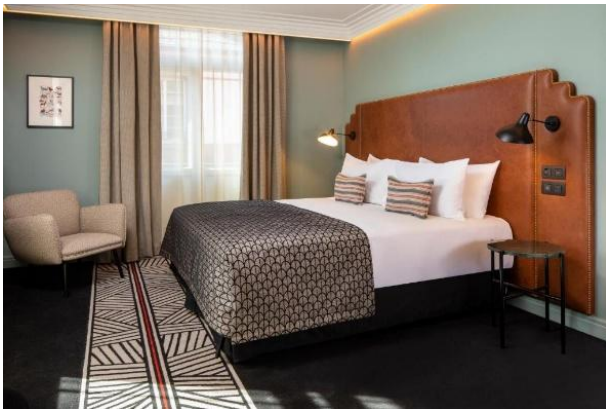
☎ : +33 3 67 70 72 72

📧 :

<https://www.marriott.com/fr/hotels/sxba-r-ac-hotel-strasbourg/overview/>

27min walking to ESF

12min by public transport (tram B –  
Lingolsheim or E – Wacken → stop at  
Republique) then walk 4 minutes



#### **Hotel Maison Rouge 5\***

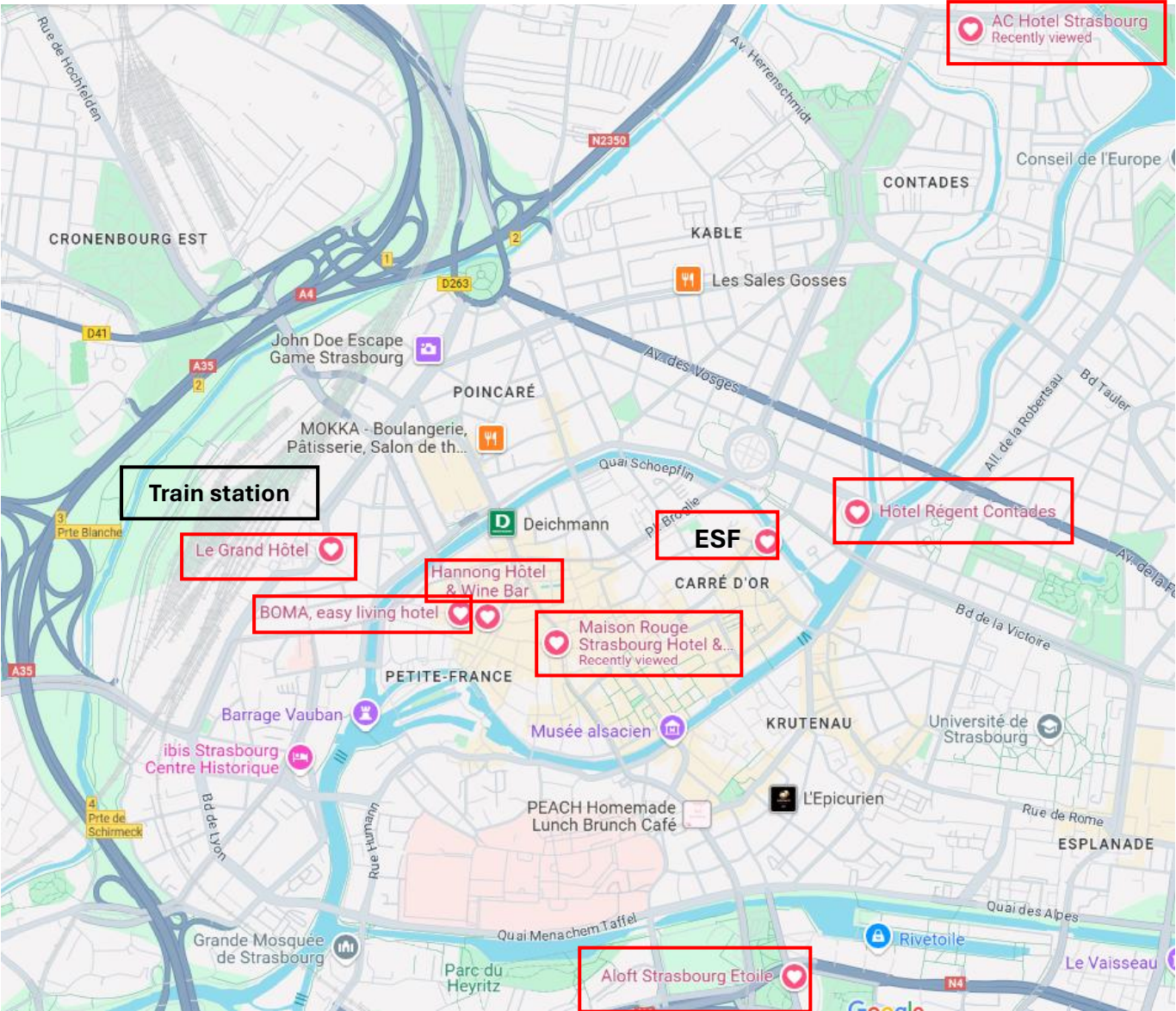
📍 : 4 Rue des Francs-Bourgeois 67 000  
Strasbourg

☎ : +33 3 88 32 08 60

📧 : <https://www.maison-rouge.com/>

14 min walking to ESF

# Map of Strasbourg with hotel location



# TRAVELLING TO STRASBOURG

## by Train

You can consult train schedules at <https://www.sncf-connect.com/en-en/>.

The train station is situated very close to the town centre, with connections from major French towns, Belgium, Germany, Luxembourg, the Netherlands and Switzerland. You can also come from London St Pancras, with one stop in Paris.

| <b>Train Station</b>                      | <b>Country</b> | <b>Stops - Duration</b>   |
|---|----------------|---|
| Paris CDG Airport                         | France         | Direct - 2 Hours  |
| Paris Intramuros "East Train Station"     | France         | Direct - 2 Hours  |
| Marseille                                 | France         | Direct - 6 Hours  |
| Lyon                                      | France         | Direct - 4 Hours  |
| Bruxelles Midi/Brussel Zuid Train Station | Belgium        | 2 Direct a Day - 4 Hours ; Many trains with 1 stop in Paris - 4 Hours       |
| Cologne - Koeln HBF                       | Germany        | 1 Stop - 3,5 Hours  |
| Frankfurt Main HBF                        | Germany        | Direct or 1 Stop - 2 Hours  |
| Hannover HBF                              | Germany        | 1 Stop - 4,5 Hours  |
| Munich - Muenchen Pasing                  | Germany        | 1 Direct a day - 4 Hours ; Mainly trains with 1 stop in Stuttgart - 4 Hours |
| Stuttgart HBF                             | Germany        | Direct - 1,5 Hour   |
| Luxembourg                                | Luxembourg     | Direct - 2 Hours  |
| Amsterdam Centraal Station                | Netherlands    | 1 Stop - 6 Hours  |
| Bern                                      | Switzerland    | 1 Stop - 2,5 Hours  |
| Zurich                                    | Switzerland    | 1 Stop - 2,5 Hours  |
| London St-Pancras                         | UK             | 1 Stop - 5 Hours  |

## by Plane

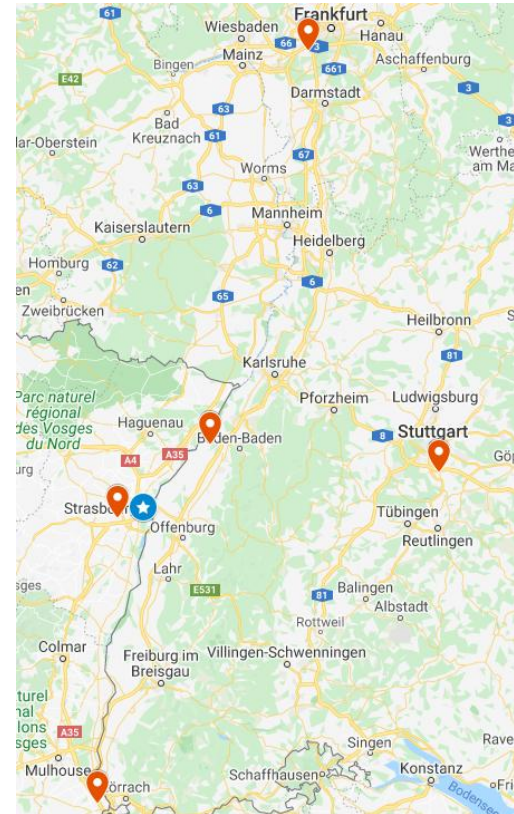
*Nearest airports:*

### **Strasbourg Entzheim airport - SXB**

(<http://strasbourg.aeroport.fr/en>) is about 20 km from the city centre.

Depending on the dates, direct lines to Madrid, Barcelona, Bordeaux, Amsterdam, Munich, Nantes, Nice, Istanbul

- We recommend taking the [shuttle train](#) that runs between the airport and Strasbourg central station. It departs up to 5 times an hour, and takes only 8 minutes. A ticket costs c. 4.70 € and will also allow you to connect to the bus and tram lines for 90 minutes following validation. From the station you can walk or take the tram (see directions under “Getting around Strasbourg” below).
- A taxi will take 20-25 minutes and cost about 40 € from the airport into the centre of Strasbourg (an evening/night fare will be more expensive).



**Karlsruhe-Baden airport - FKB** (<http://www.baden-airpark.de/startseite.html?&L=1>) is about 40 km from Strasbourg and is mainly served by Air Berlin and Ryanair.

- There is a bus to Strasbourg (taking about an hour; cost c. 27 € – see <https://alsace-navette.com/en/reservation/create>. Please note that a reservation is mandatory.

**Stuttgart airport - FKB** ( <https://www.stuttgart-airport.com/?cl=en>)

- Stuttgart Airport to Stuttgart Central Railway Station: 27 minutes. 4 times per hour. Then train to Strasbourg (see arriving by train)
- Shuttle bus: <https://alsace-navette.com/en/reservation/create>
- If several people arrive at the same time, we have a contact with a private shuttle.

*Slightly further from Strasbourg, but well connected to all the European airports:*

**Basel-Mulhouse Euro airport – EAP/MLH/BSL** (<https://www.euroairport.com/fr/>)

- [Shuttle bus](#) from the airport to Saint Louis train station (10 min, 2.5€, ) then direct train to Strasbourg (10€-recommended to be booked in advance on the [SNCF website](#))

**Frankfurt – FRA** (<https://www.frankfurt-airport.com/en.html>)

- Train with one stop in Karlsruhe (<https://www.bahn.com/en>)
- Lufthansa shuttle bus, travel time approx. 3 hours, which stops at Strasbourg train station
- Various companies also provide airport shuttles – see the websites for information and prices: Alsace NavetteAirport [www.alsace-navette.com](http://www.alsace-navette.com)

**Paris Charles de Gaulle – CDG** (<https://www.parisaeroport.fr/en/charles-de-gaulle-airport>) :

- direct trains to Strasbourg <https://www.sncf-connect.com/en-en/> :

# GETTING AROUND STRASBOURG

## From train station to ESF:

Take the Tram C (you will find it on the left when you exit the train station). Stop at “République”.

If you take Tram B, cross the tram rails, then cross the small bridge “Passerelle des Juifs” and turn left onto Quai Lezay-Marnesia. ESF will be opposite the street and on your right when you reach the crossroads (entrance at the green gate, *1 rue des Récollets*). If you take Tram F, you will stop a few metres away from the other station. Turn left as you exit the tram and then into the first street on your right and cross the bridge.

The ESF is on the left by the river (entrance at the green gate, *1 rue des Récollets*).



ESF Entrance at the green gate, 1 rue des Récollets

## RECOMMENDED ACTIVITIES

The tourist office website: <https://www.visitstrasbourg.fr/en/welcome-in-strasbourg/>



### **Batorama**

3 Imp. de la Grande Boucherie, 67000  
Strasbourg

<https://www.batorama.com/en>

Aboard a river boat, you will discover the historical treasures and heritage of the European capital.

## CONTACT FOR LOGISTICS

For any questions regarding logistics: H el ene Schaffner – [hschaffner@esf.org](mailto:hschaffner@esf.org)